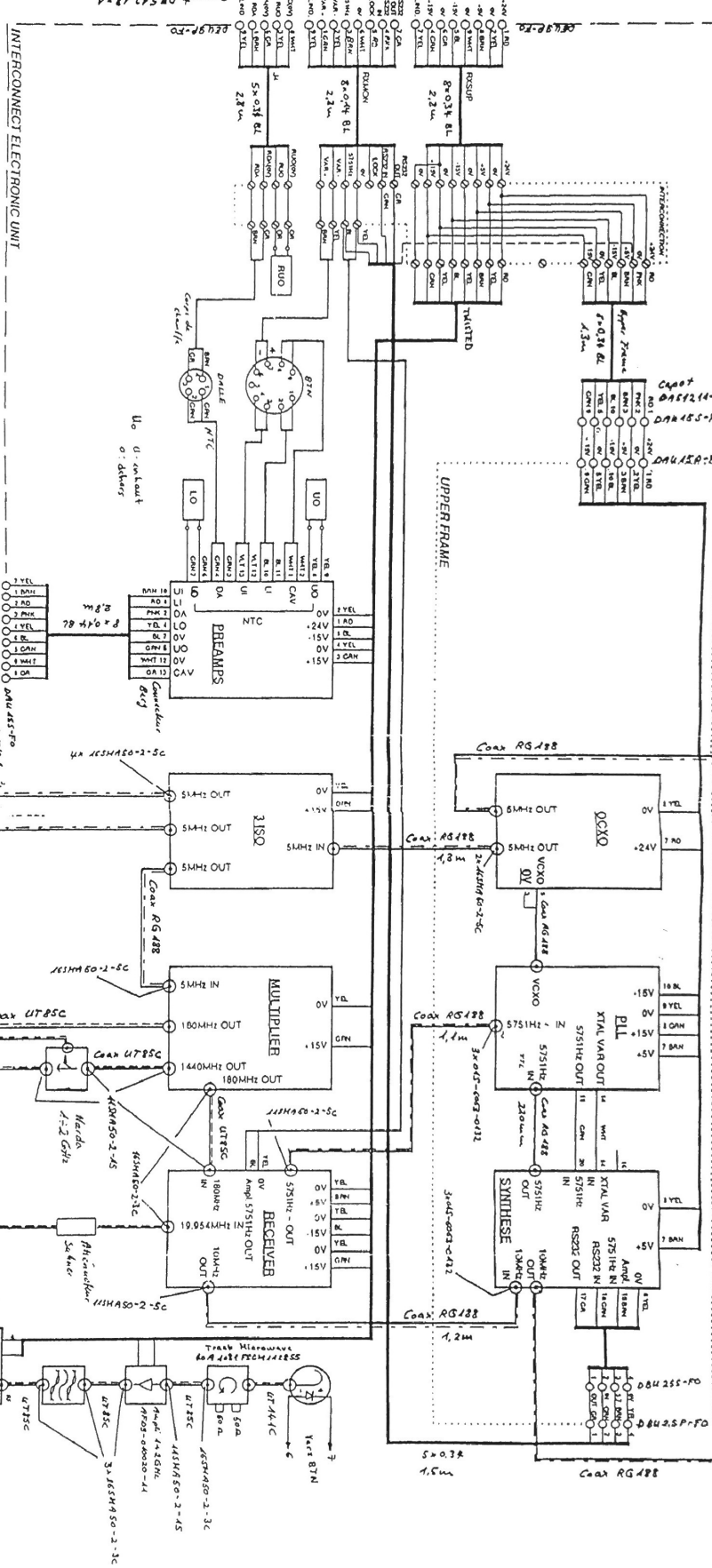


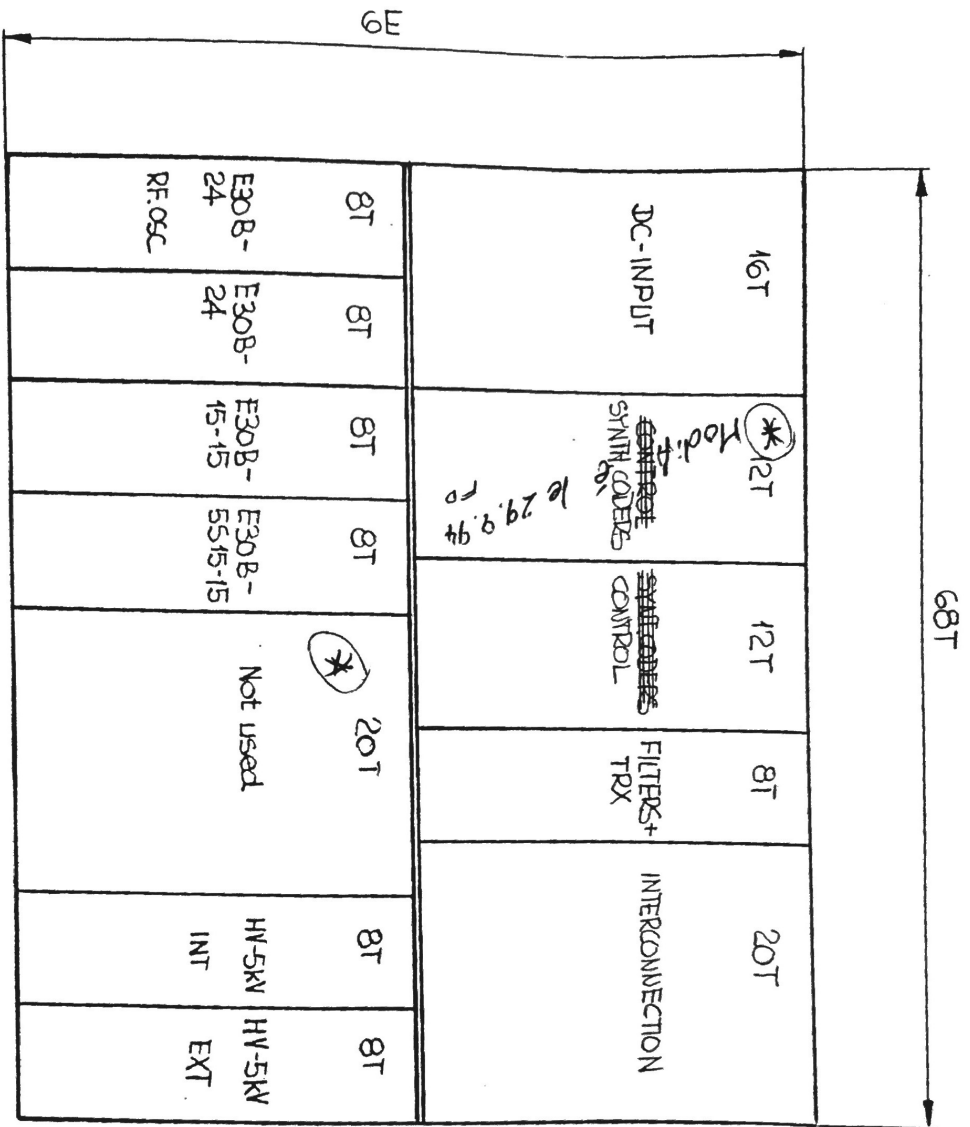
OPTIONALS
 2x out-coupler 0-012
 1x out-coupler 1-102 001 EP08 40
 40PS
 400 MHz Multi-Plexer



File 034uuw.2
 45M450-2-3C Coupler UT85C
 45M450-2-4S diode UT85C

physic function
 1.5mH 2.2V 1.5V 1.5V
 di EP08 40

4x 5751Hz-50-1
 Cells of 1/2" wave port
 half 1/2 wave

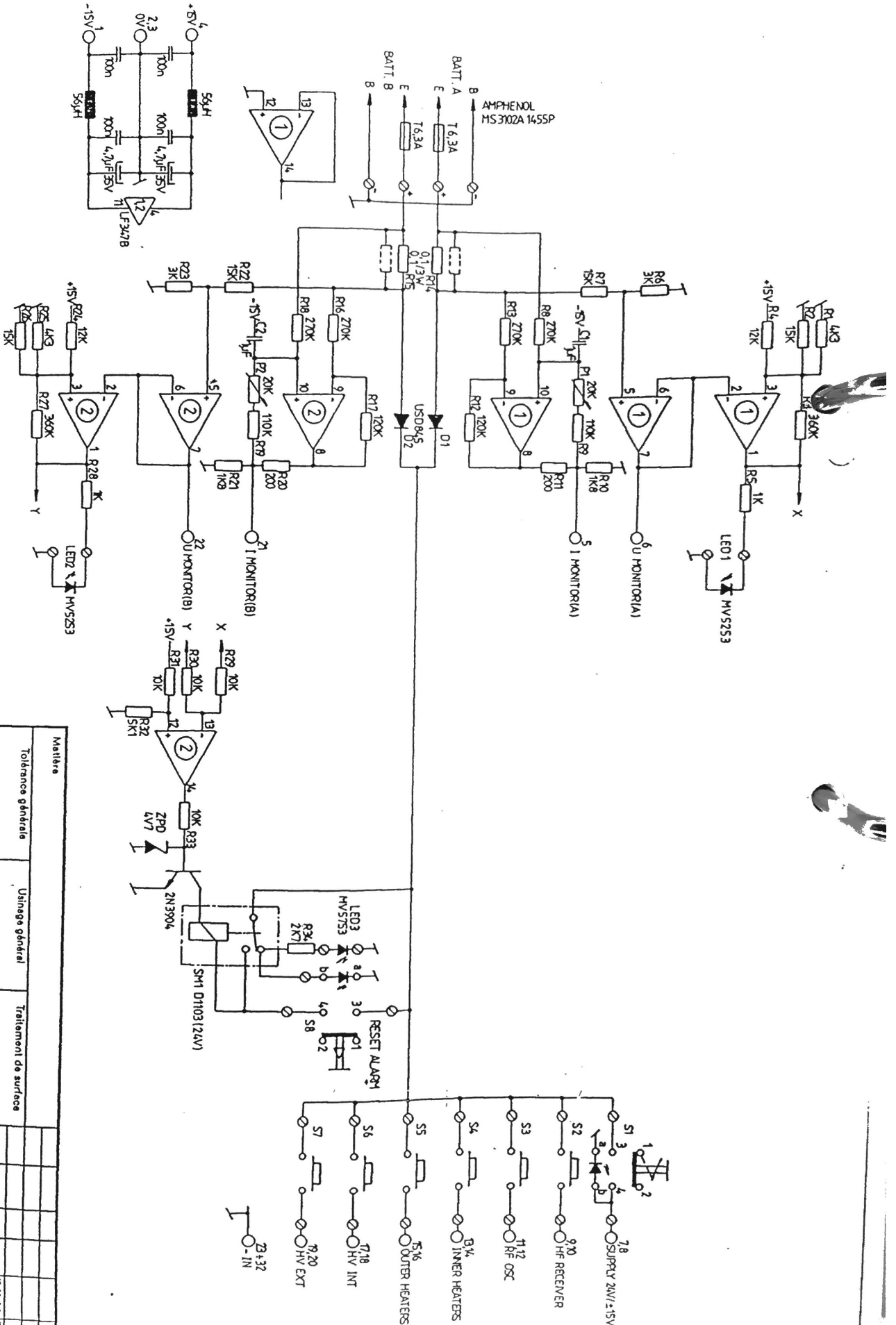


* change la synthese
 Installe nouvelles carte
 UO-LO, UI-21-DA.

DISPOSITION BOITIER ELECTRONIQUE
 EFOS-3

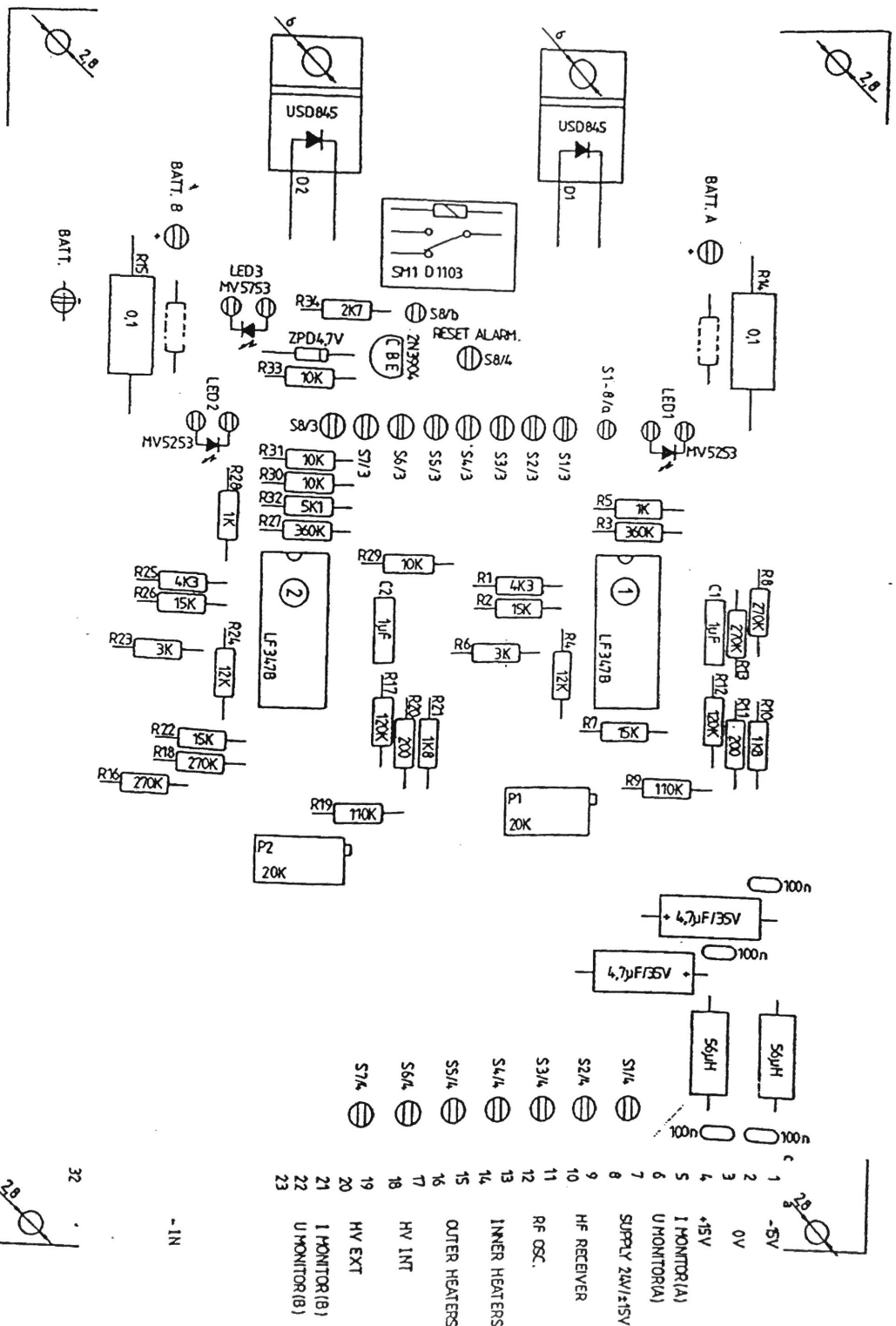
14.1.87

Ce document reste notre propriété. Le destinataire ne peut, sans autorisation expresse et écrite de notre part, le reproduire ou le communiquer à des tiers. OSCILLOQUARTZ S.A. NEUCHÂTEL SUISSE

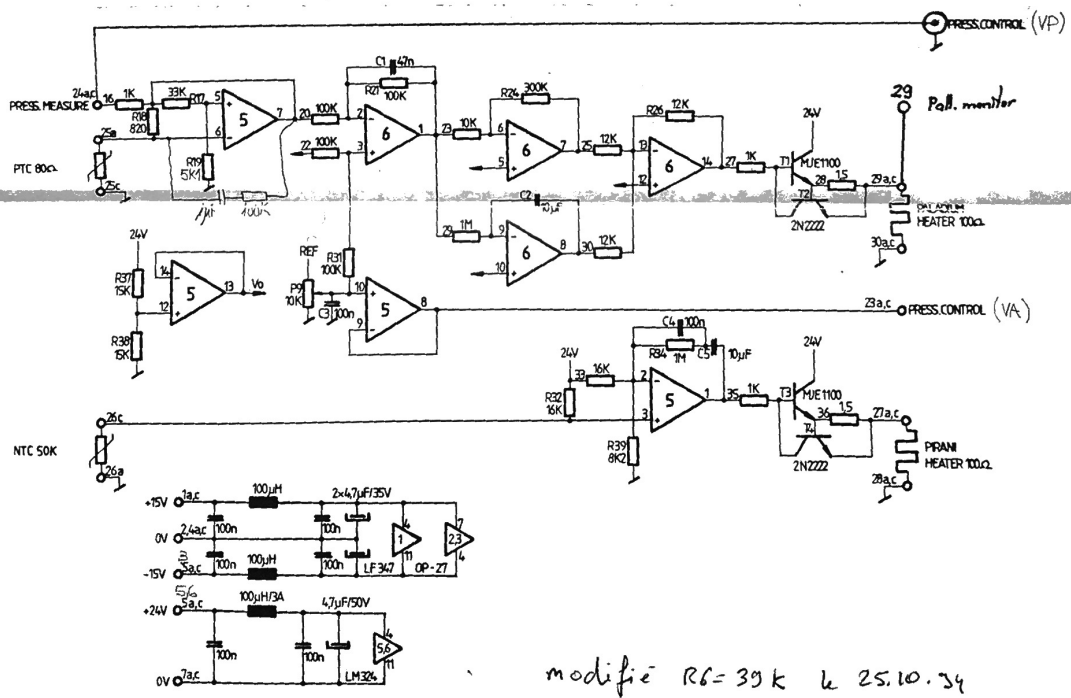
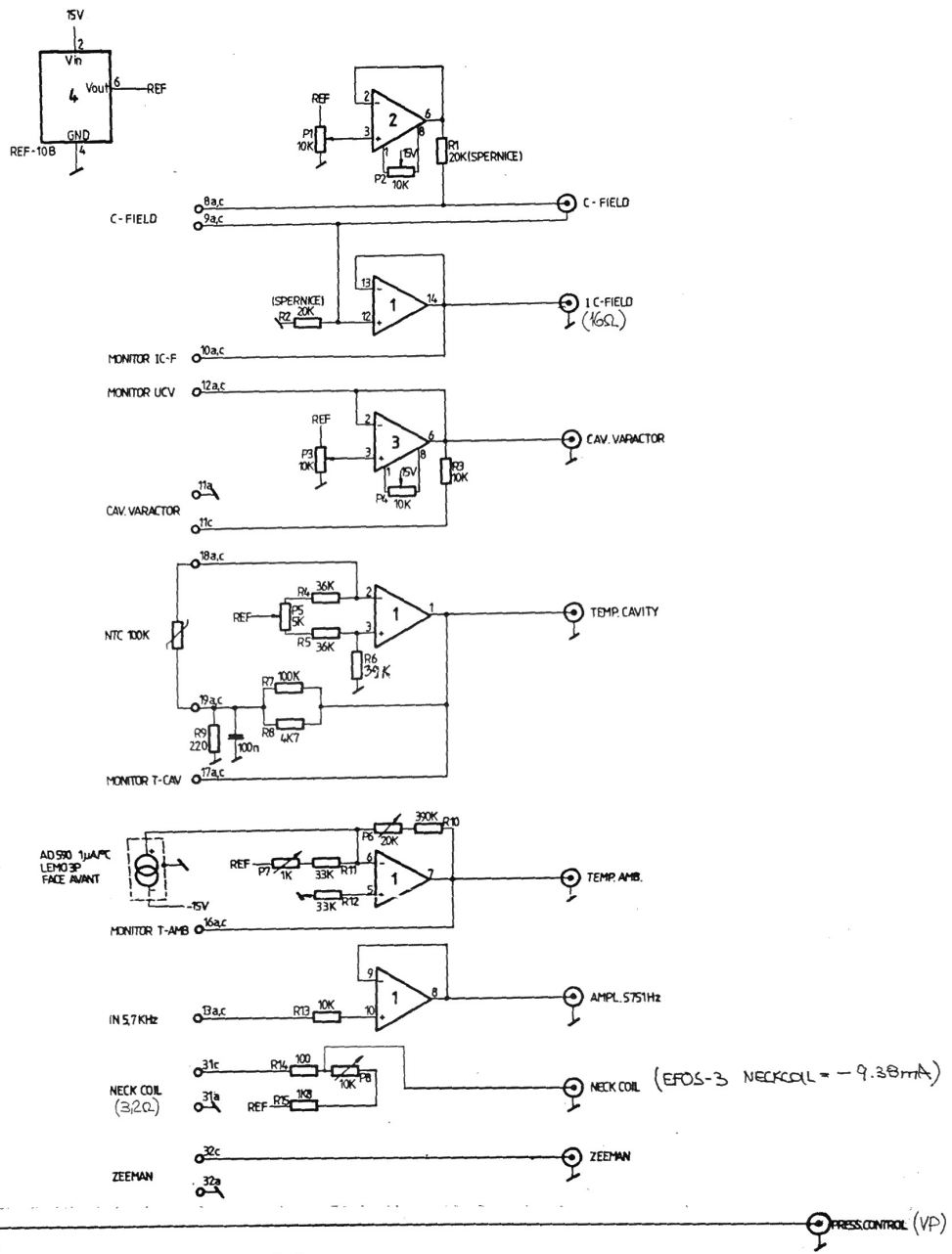


Matière		Usinage général		Traitement de surface	
Tolérance générale					
DC INPUT COMMAND					
NEUCHÂTEL SUISSE					
8002-30-22-1161B					
Mod.	Date	Vna	Méd.	Date	
Echelle		Contrôle			
Dessiné		Vn			
25.9.84					

- ⊖ = PLOT A FOURCHE N° 537/20 (JAEGER)
- ⊖ = PLOT A FOURCHE N° 537/24
- ⊕ = PLOT A SOUDER N° 20 00 254 (COMATEL)
- + = SOUDER/CIR. IMP

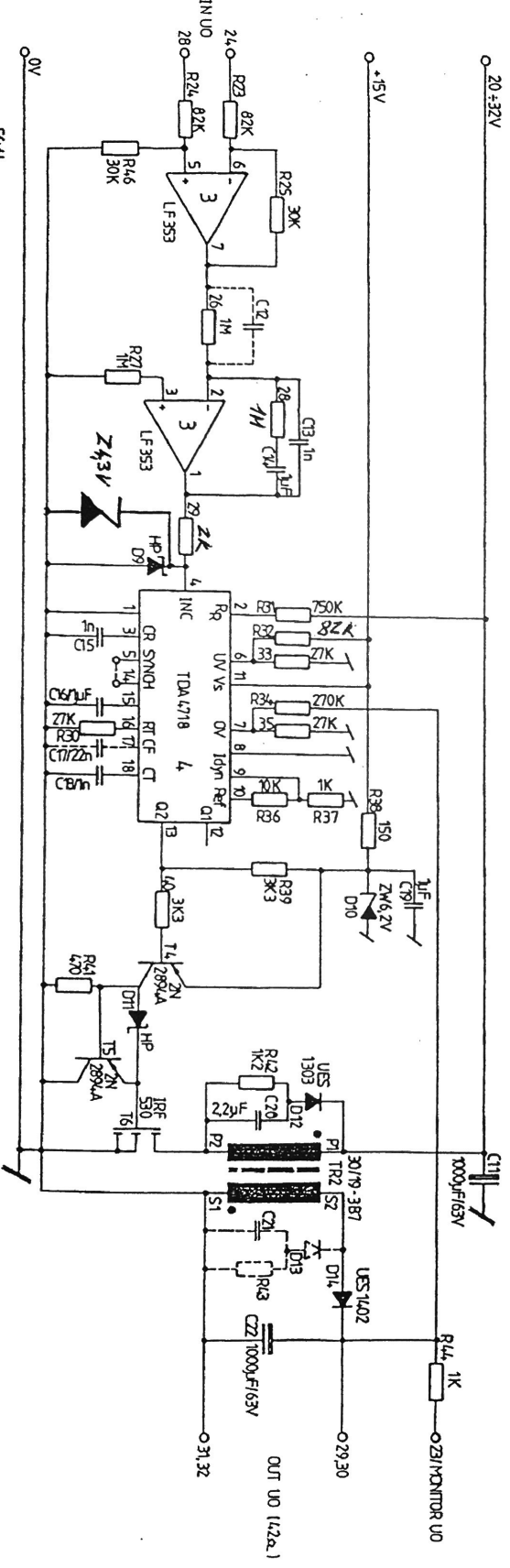
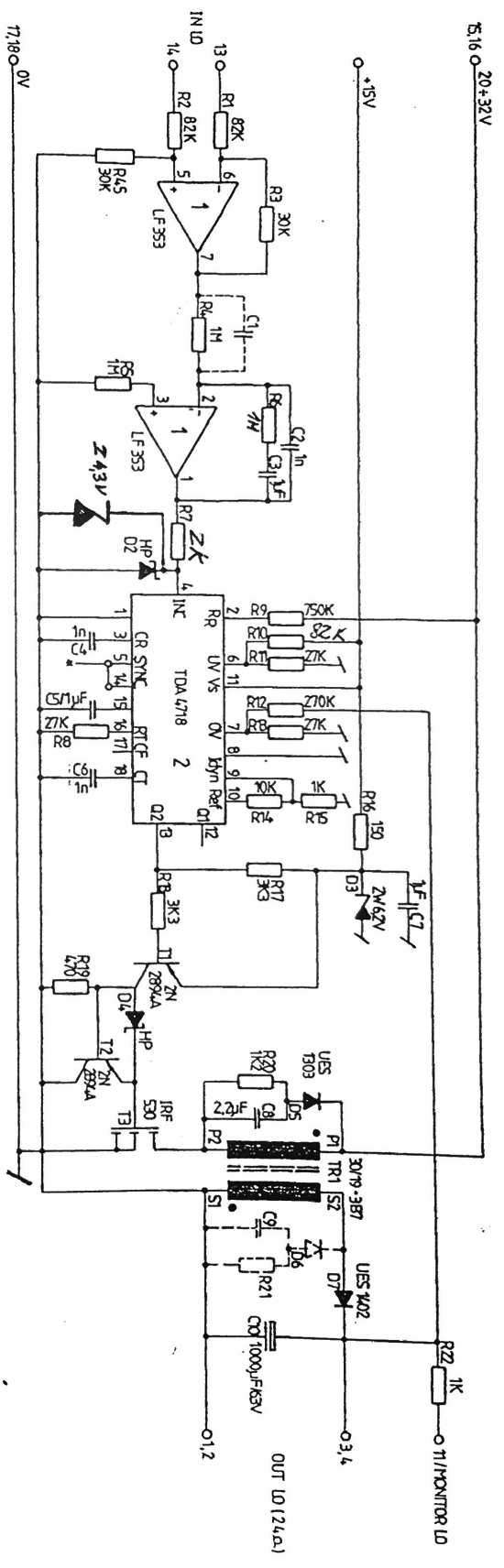


DC INPUT COMMAND
COMPONENT MOUNTING
8002-30-24-1161B

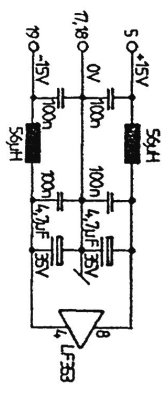


modifié R6 = 39k le 25.10.74

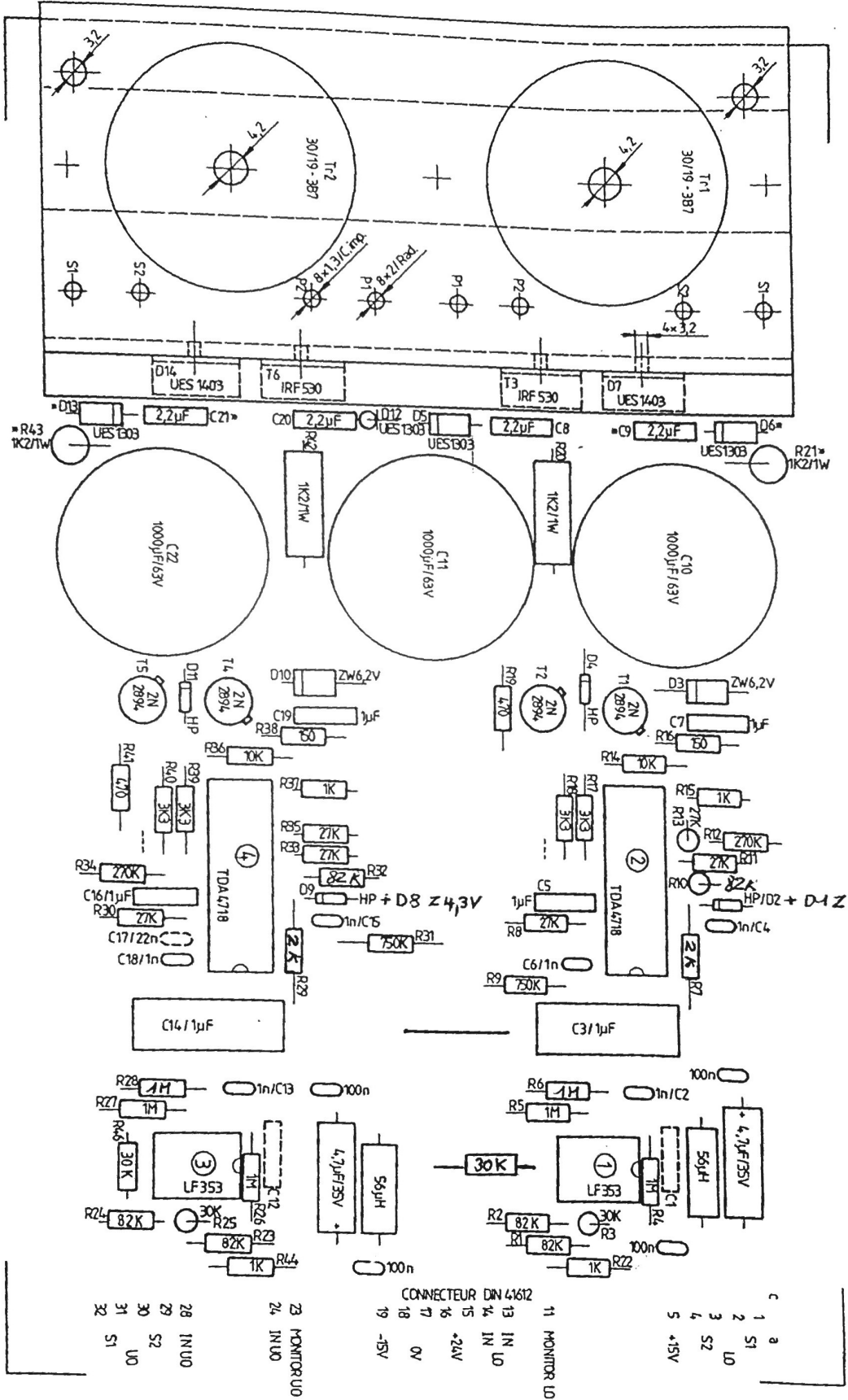
	Modèle Contrôles optiques	Utilisation générale	Traitement de surface
	Référence 8002-30-22-1182A EFOS-03 1.0.6.73	Date 25.10.74	Date 20.10.83
Echelle Contrôle	Mod. Date Via Contrôle	Mod. Date Via Contrôle	Mod. Date Via Contrôle



■ POUR ASSURER UN COUPER LA PISTE 5-14(UD) ET METTRE C17 = 22nF



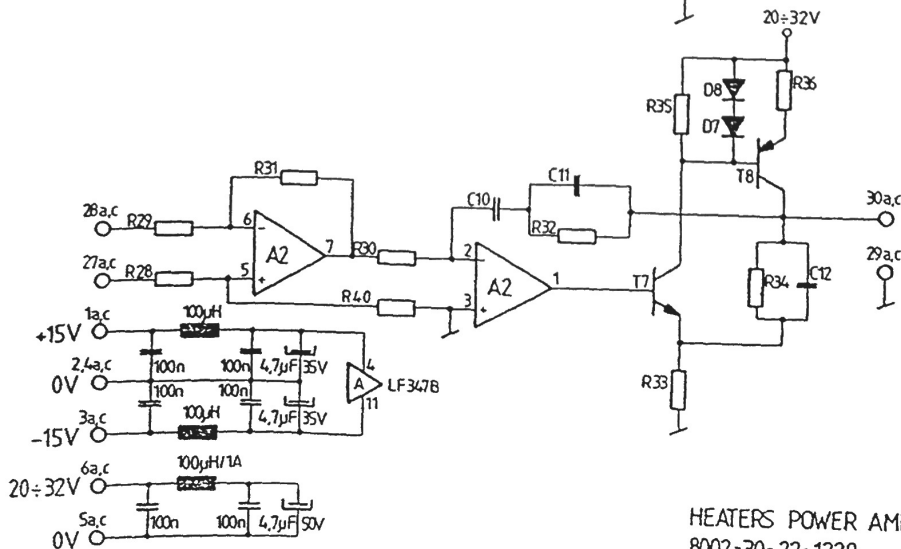
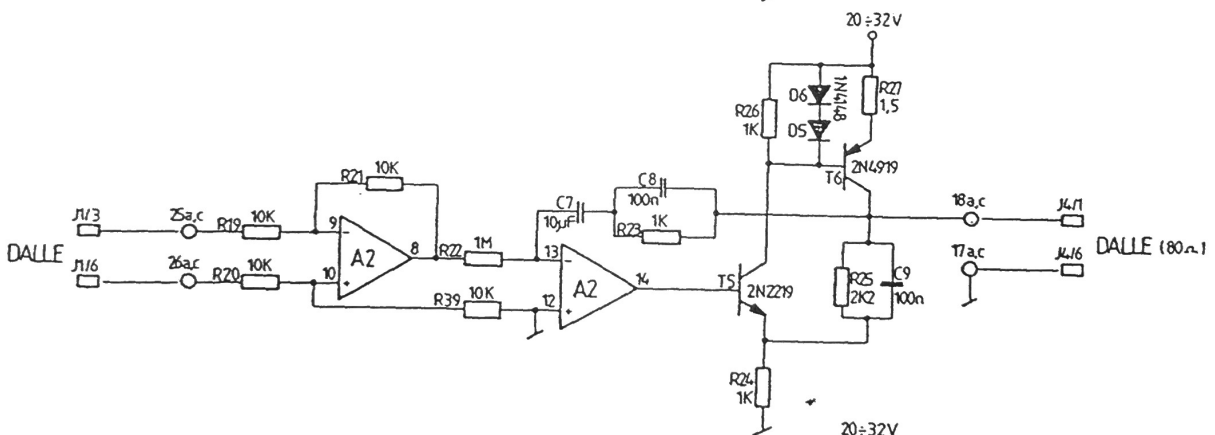
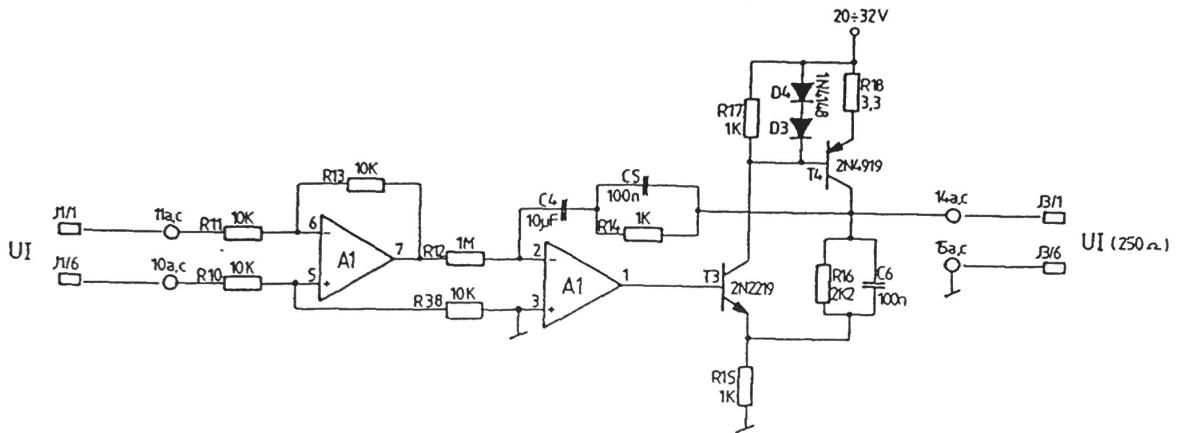
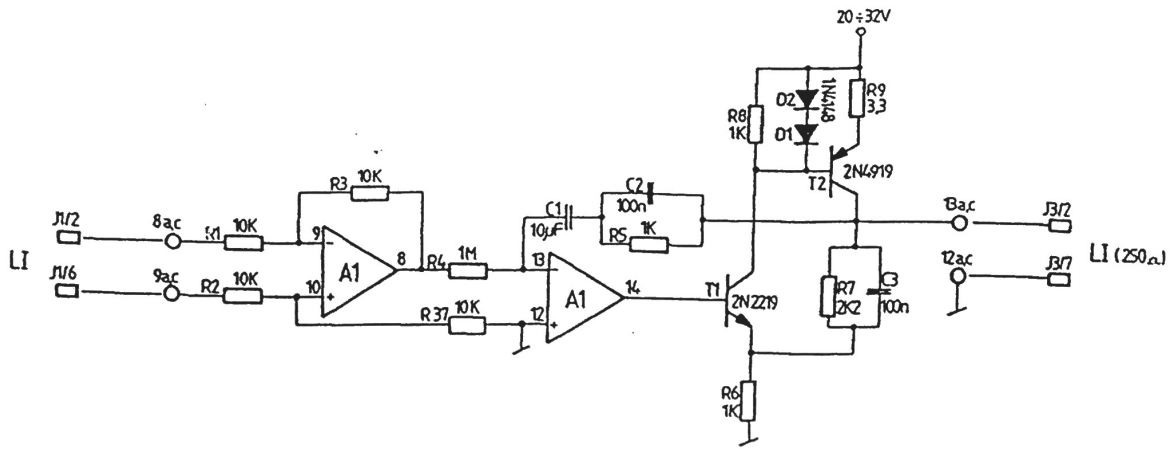
POWER AMP HEATERS UD-LD
 8002-30-22-1294
 Mod. le 30.05.88 FRD N°004
 Mod. du 16.02.94 FRD



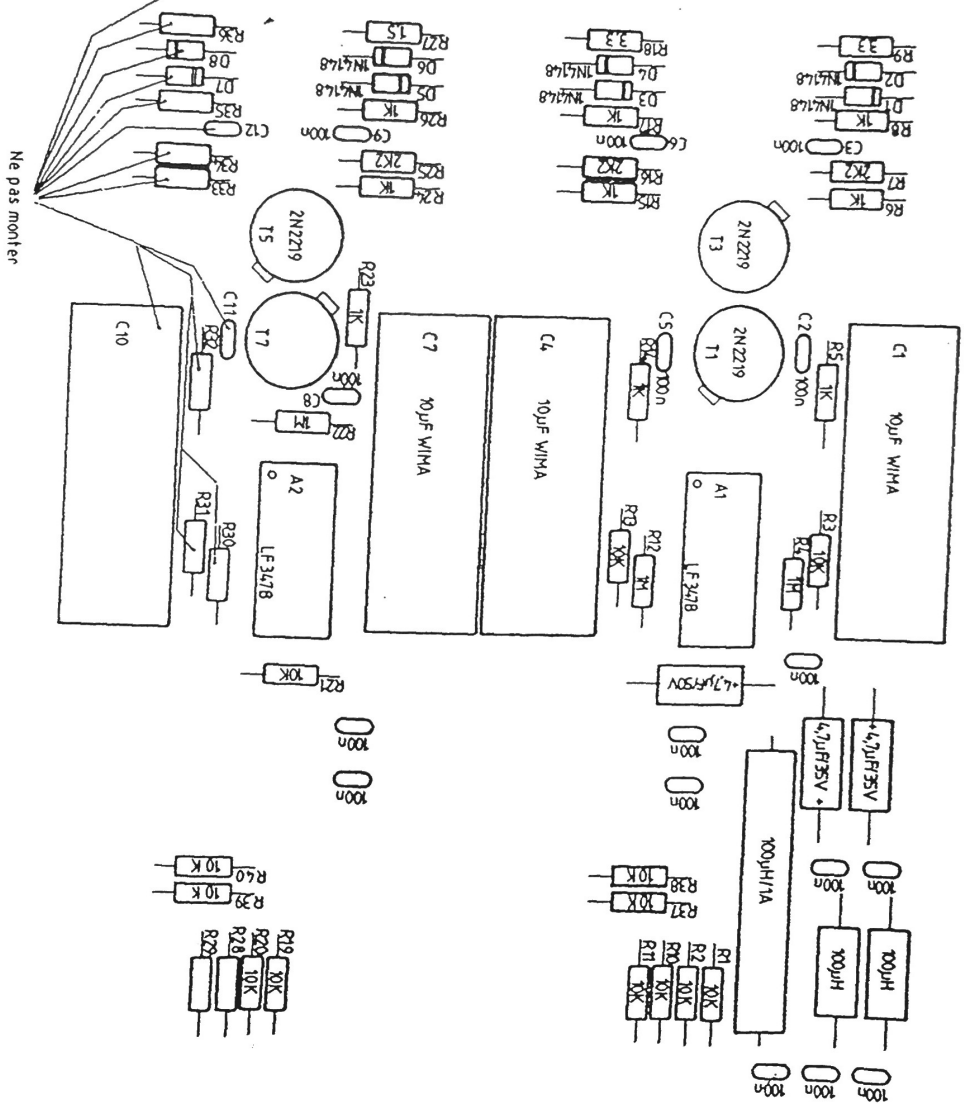
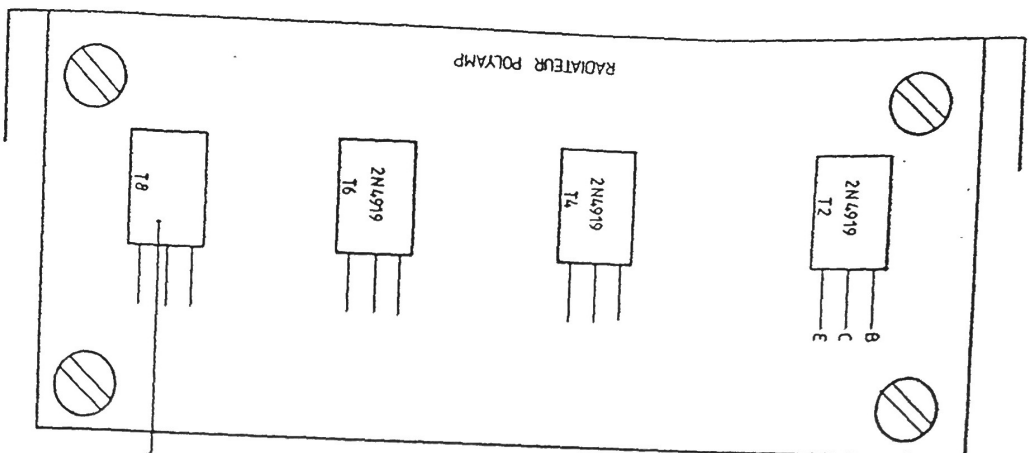
* COMPOSANTS NON MONTES
 SUR IC ② COUPER LA PISTE ENTRE PINS 5 ET 14, MONTER C17
 MONTER PINS IC 3 ET R27

POWER AMP HEATERS UO-LD
 COMPONENT MOUNTING
 8002-30-24-1294
 Mod. le 31.05.88. FRD N°004
 Mod. du 16.09.84. FD

11.7.84



HEATERS POWER AMPLIFIER [DALLE-UI-LI]
 8002-30-22-1229
 Mod. le 30.05.88. FRD. N°004



HEATERS POWER AMP(DALLE-UI-LI)
COMPONENT MOUNTING
8002-30-24-1229
Mod... le 30.05.88 FRD. N°004

CONNECTEUR DIN 4612

destinataire ne peut, sans autorisation,
 exprimer et écrire de notre part, le
 reproduire ou le communiquer à des tiers.
 OSCILLOQUARTZ S.A. NEUCHÂTEL SUISSE

Position	Nbre	Désignation	Norme, stock, etc.	OSA N°
1	1	Circuit imprimé	8002-30-25-1229	Printelec
2				
3	2	Quad op-amp	LF347B	Fenner
4	2	Socket 14 paires	USO-14T	Coupons
5				
6	1	Résistance 1,5	NR25	Philips
7	2	33		
8	9	1k		
9	3	2k2		
10				
11	12	10k		
12	3	1M		
13				
14	16	Condensateur céramique	100nF multicouche 9932 313 00235	Philips
15	3	Condensateur Polycarbonate	10µF/63V / 2222 344 15106	Philips
16	2	Condensateur Tantale	4.7µF/35V Sprague	Telion
17	1		4.7µF/50V	
18				
19	6	Diode	1N4148 / 04015	ESD/ITT
20	2	Self	100µH / 1537.76 Delevan	Stolz
21	1		100µH/1A / B82 M1 EC 25	Siemens
22	3	Transistor	2N2219	Distrelec / Elba
23	3		2N4319	Elba lex
24				
25	1	Connecteur DIN 41612	96P-6033-0531-0	Liton
26				
27	1	Radiateur	8002-30-12-1229/1 Pelyamp	ECG
28	3	Isolation TO 220	60-11-8302-1673 Cho-Therm	Sicovend
29				
30	2	Vis tête cyl. fendue	M2.5x10	Bossard
31	4		M3x8	
32	3		M3x10	
33	2	Ecran	M2.5	
34	7		M3	
35	7	Rondelle ressort	M3	
36	3	Canon isolant DL=3,1	V5359/650312	Distrelec
37				
38				
39				
40				

Mod.	Date	Visa	Mod.	Date	Visa	Mod.	Date	Visa	Mod.	Date	Visa	Mod.	Date	Visa
------	------	------	------	------	------	------	------	------	------	------	------	------	------	------

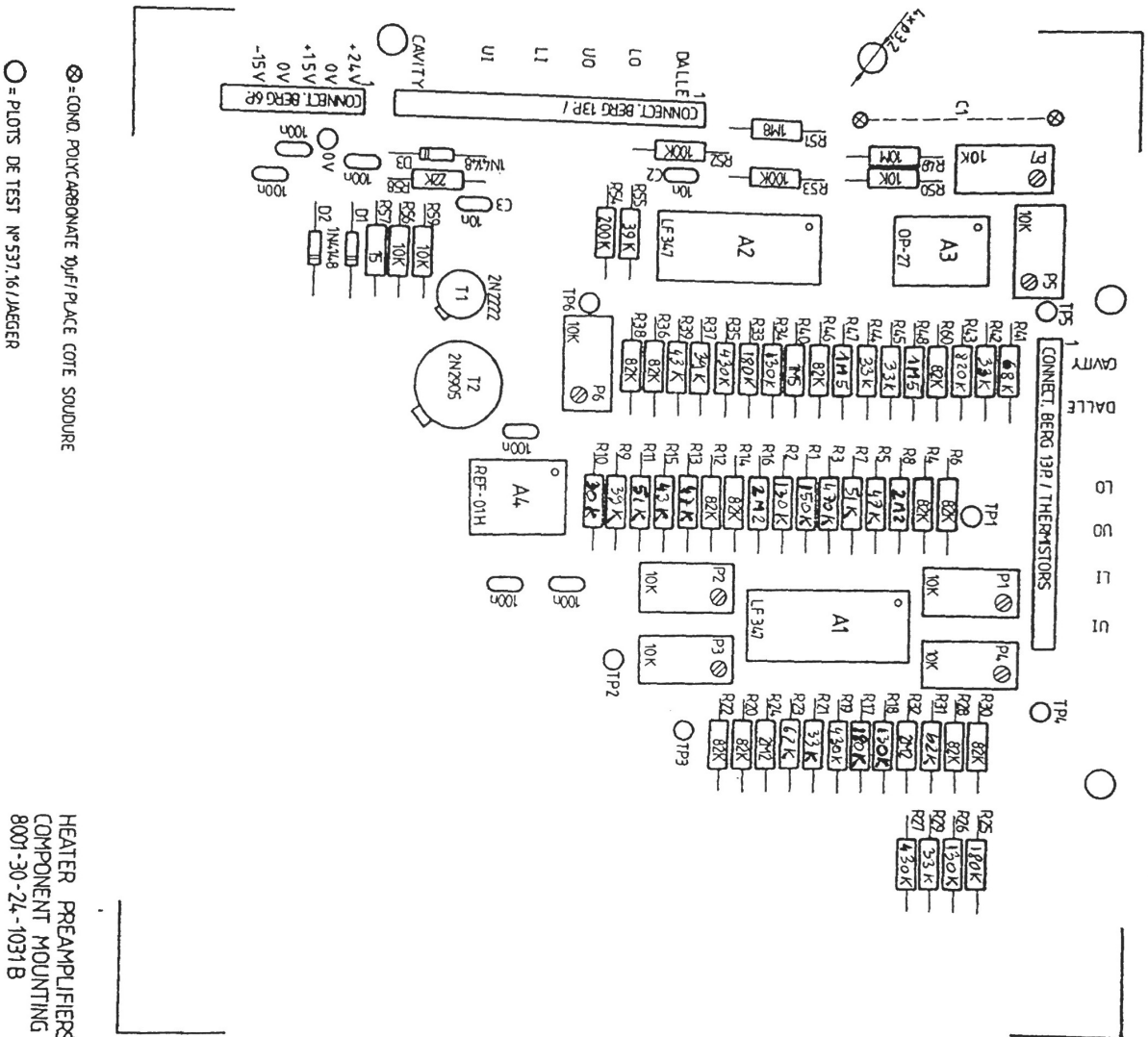
Power amp DA-LI-LI

Ecrit 28.8.86 P
 Contrôlé
 Feuille 1...
 1..Feuille



OSCILLOQUARTZ S.A.
 NEUCHÂTEL
 SUISSE

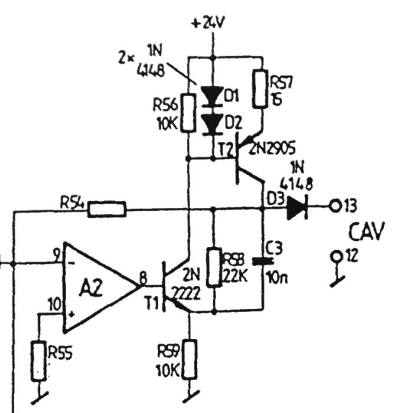
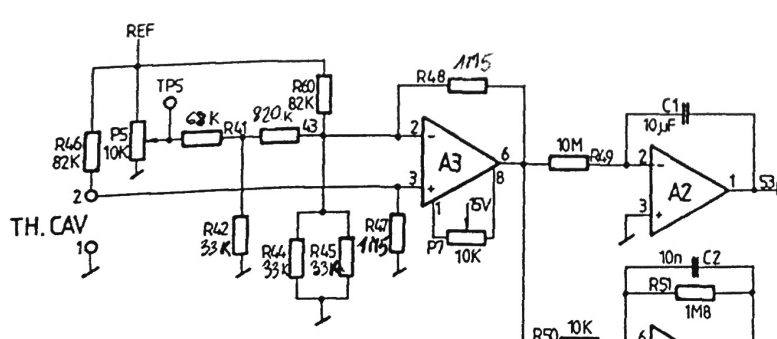
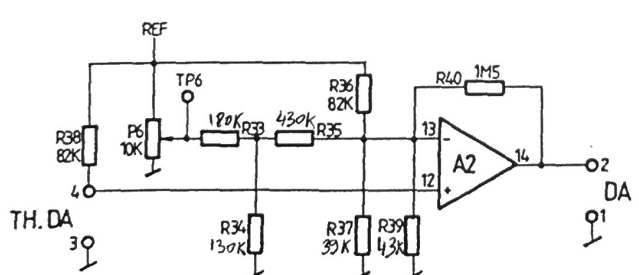
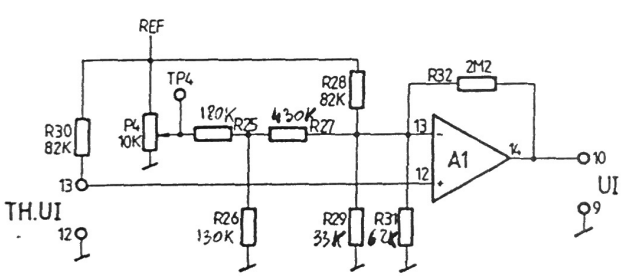
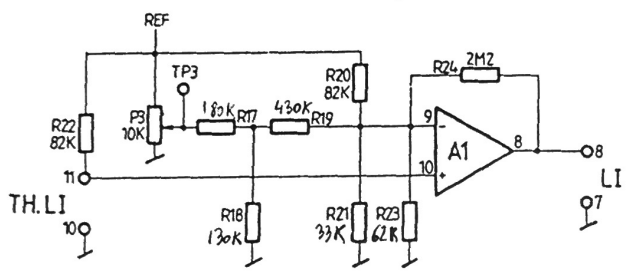
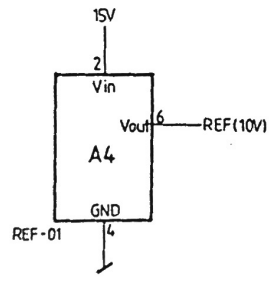
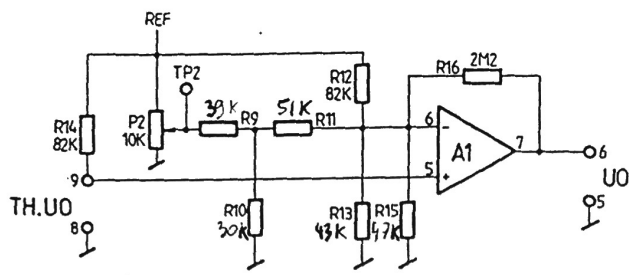
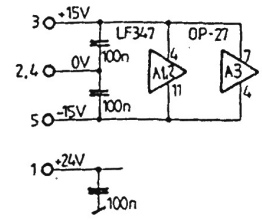
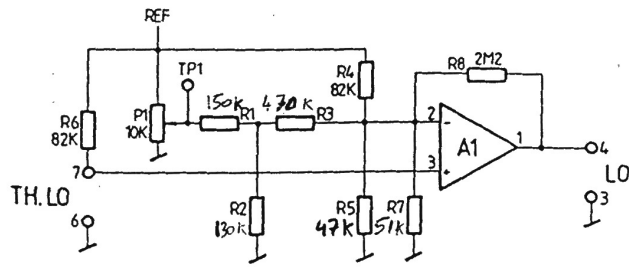
8002-40-02-1229



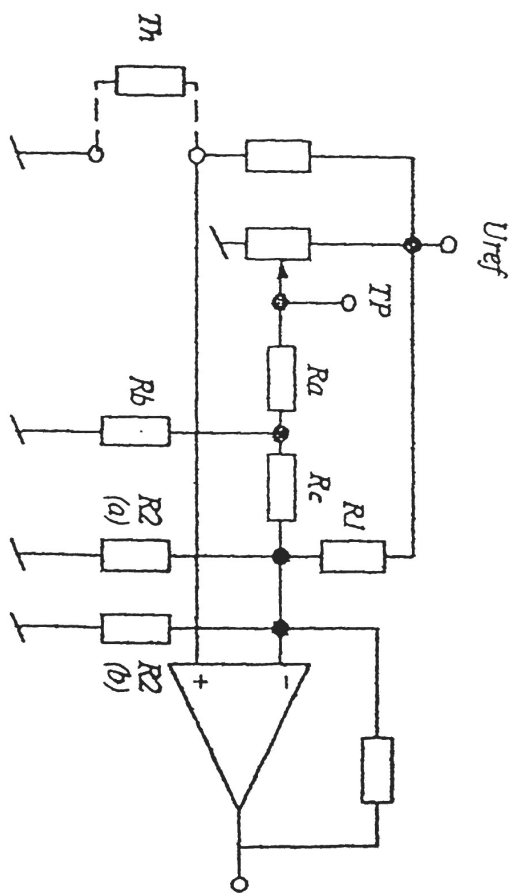
A monter sur socle les résistances suivantes :
 R1 à R3, R5, R7 à R11, R13, R15 à R19
 R21, R23, R25 à R27, R29, R31, R33 à R35
 R37, R39, R41 à R45

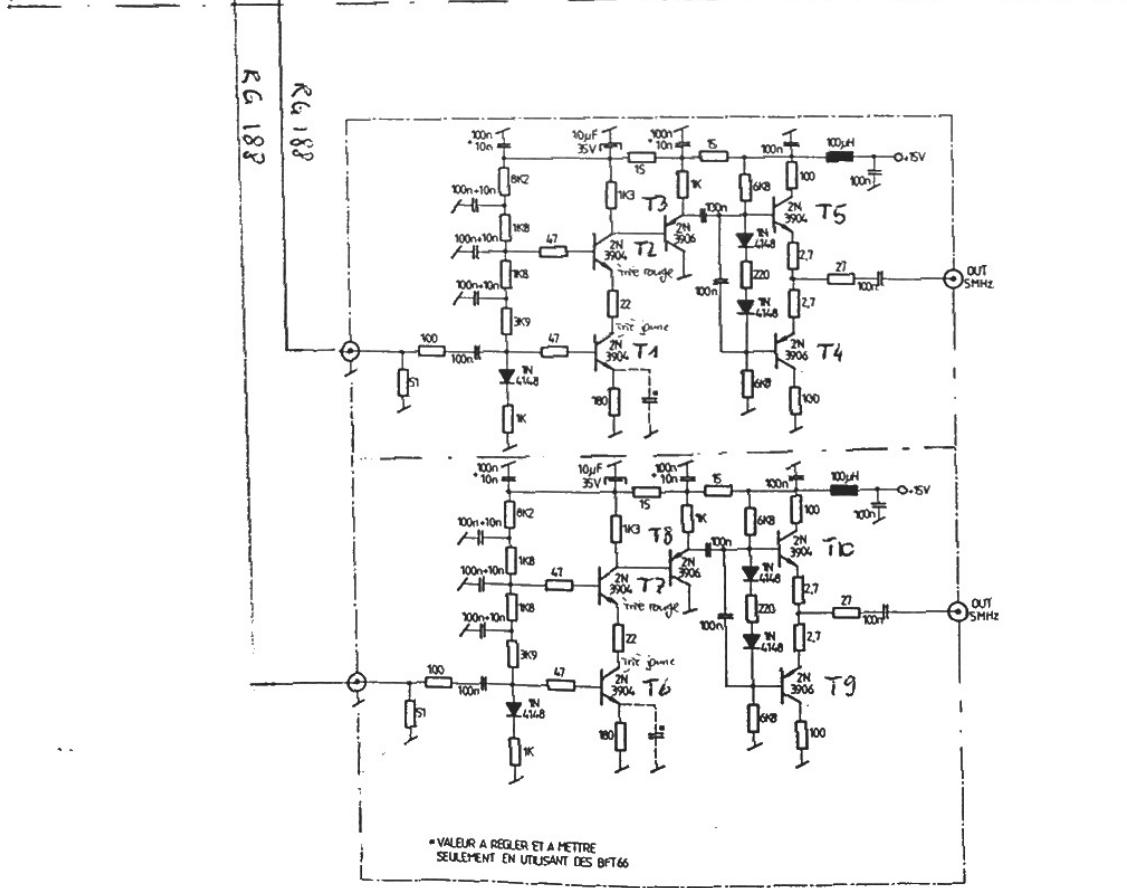
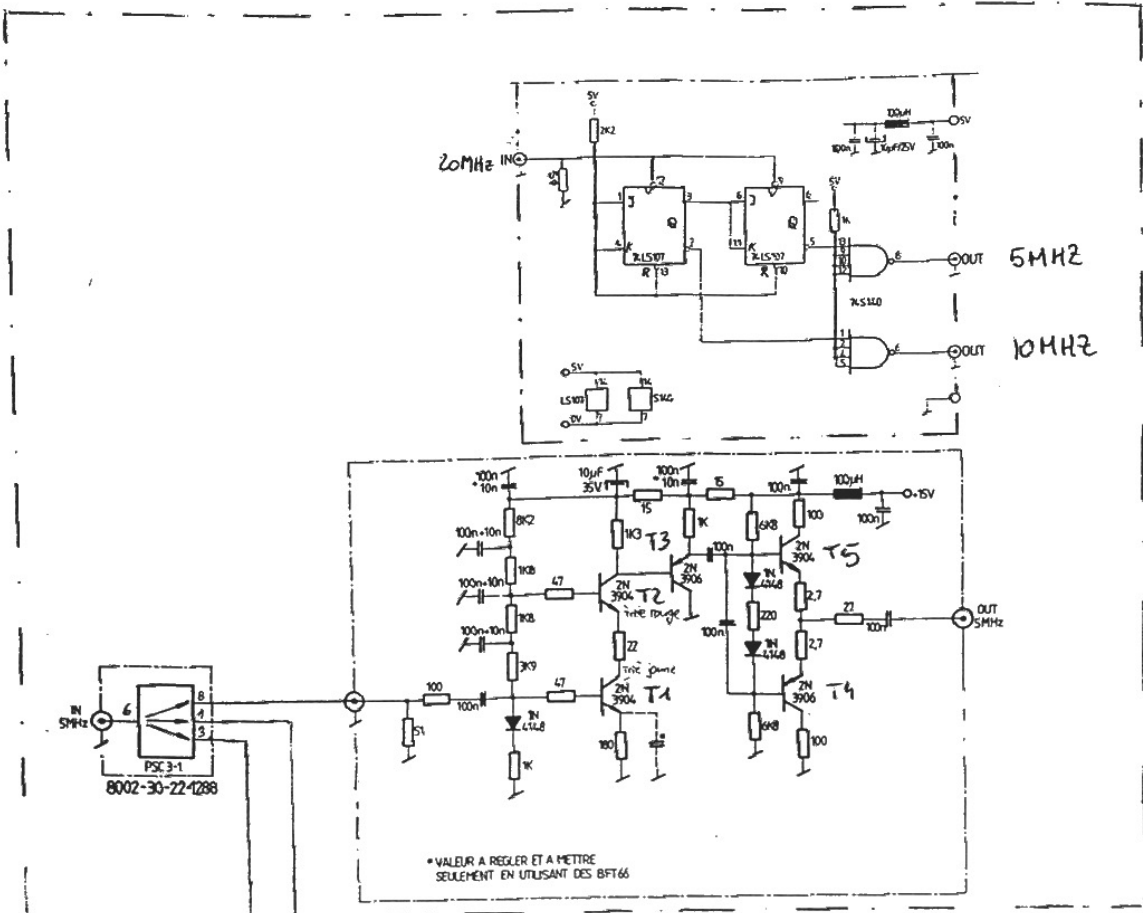
HEATER PREAMPLIFIERS
 COMPONENT MOUNTING
 8001-30-24-1031B

EFOS-3



HEATER PREAMPLIFIERS
8001-30-22-1031B

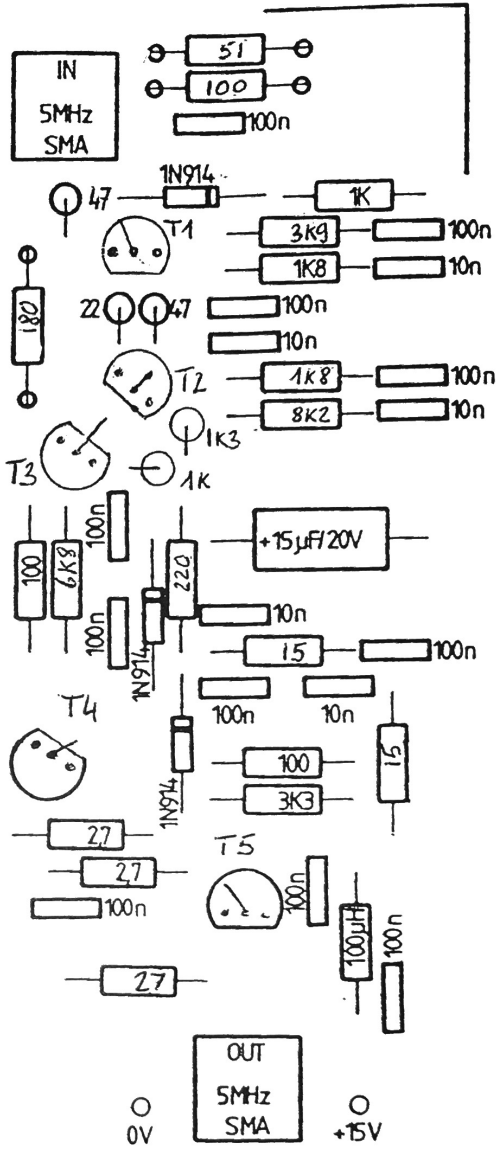
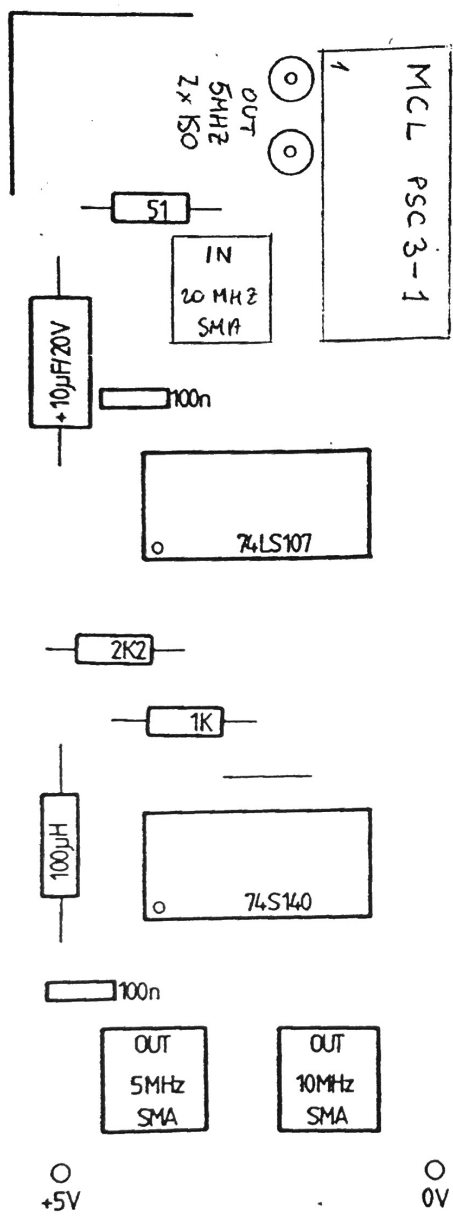




EFOS 3

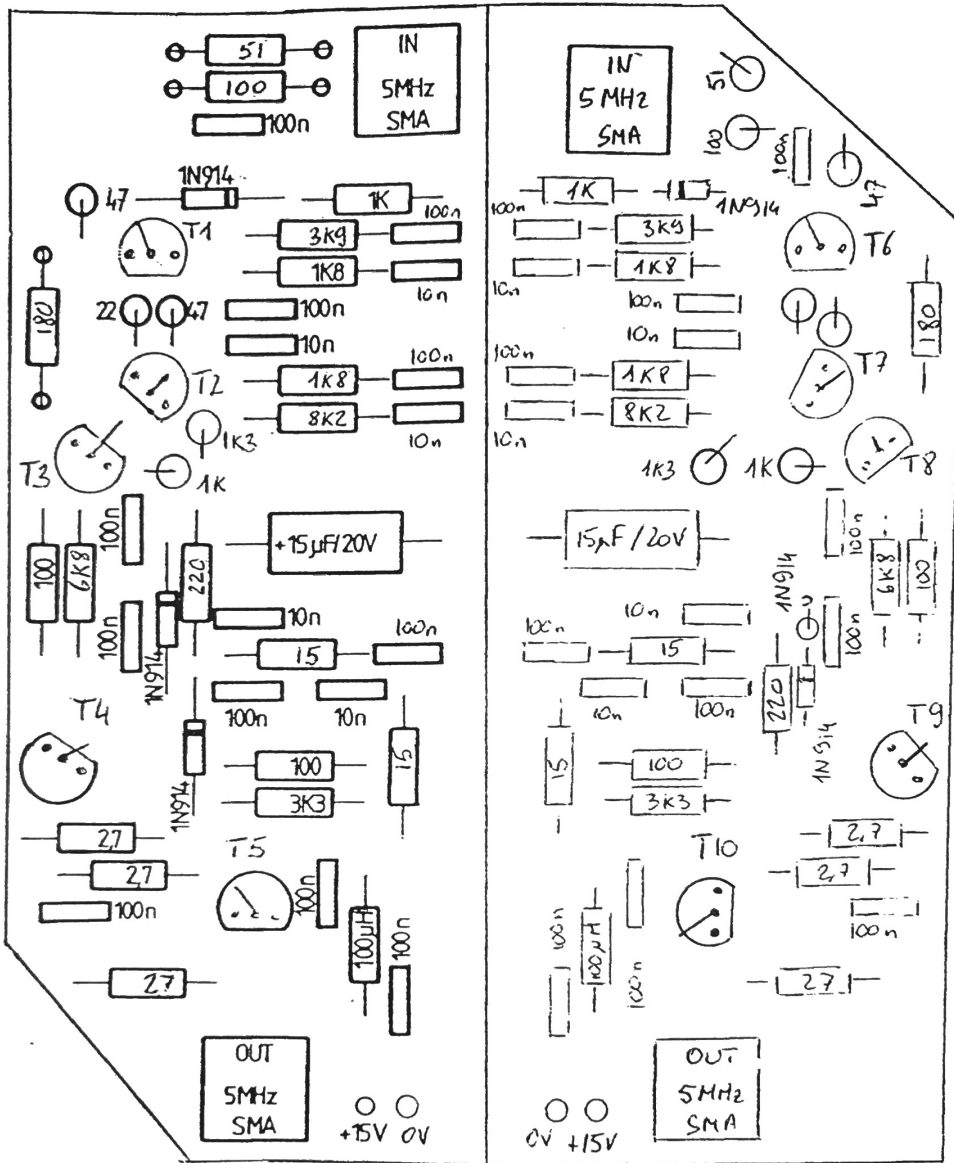
AMPLI D'ISO + BUFFER
8002-40-22-1166

14.10.94 LG



T1, T2, T5 : 2N3904 "trié"
 T3, T4 : 2N3906 "trié"

ISOLATION AMPLIFIER & BUFFER
 COMPONENT MOUNTING
 8002-30-24-1166
 Révisé pour EFOS 3 le 13.10.94
 LG

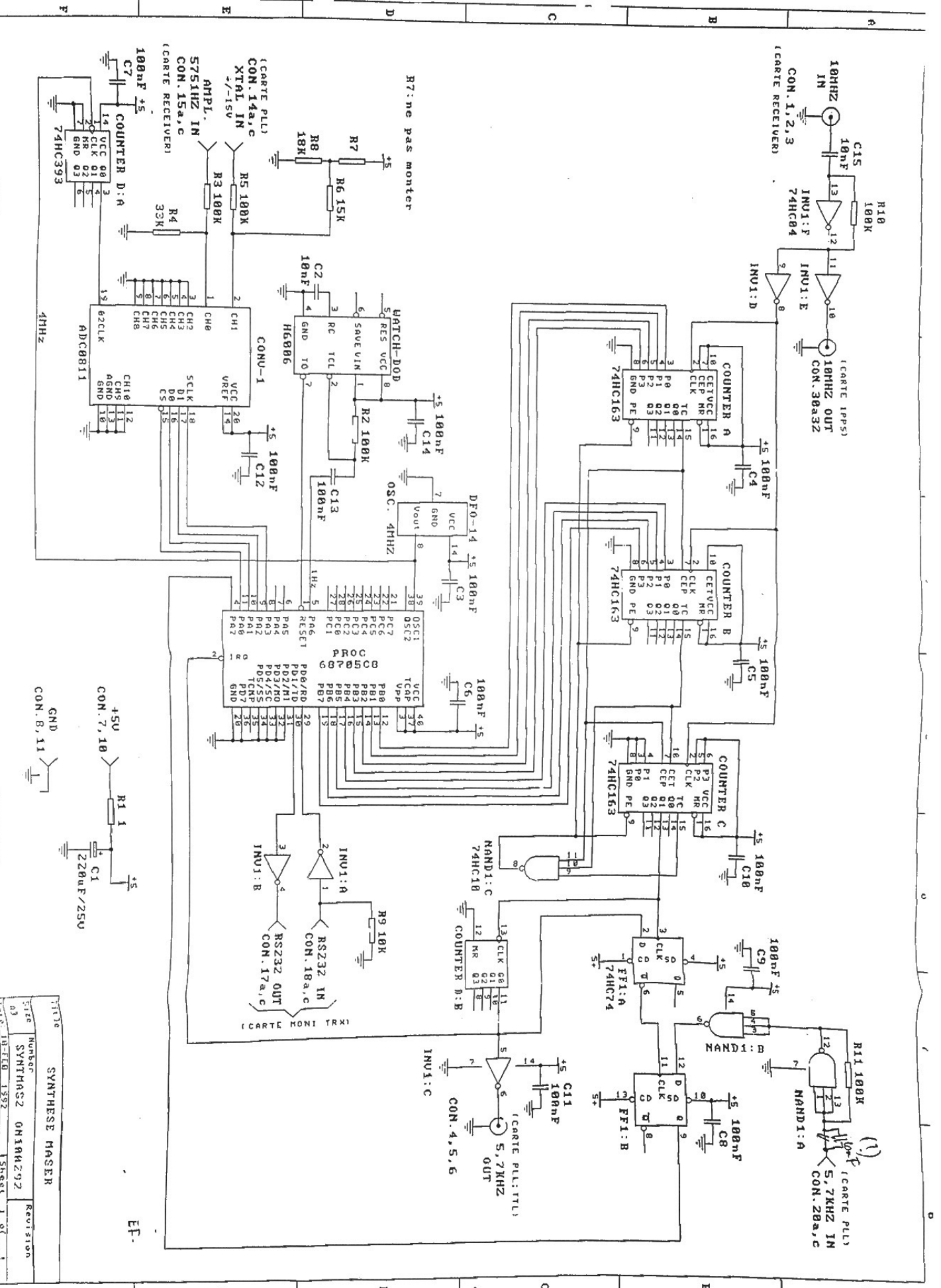


T1, T2, T5 > 2N3904 "trié"
 T6, T7, T10 >

T3, T4 > 2N3906 "trié"
 T8, T9 >

ISOLATION AMPLIFIER
 COMPONENT MOUNTING
 8002-30-24-1166

Révisé pour EFOS 3 le 13.10.94
 LG



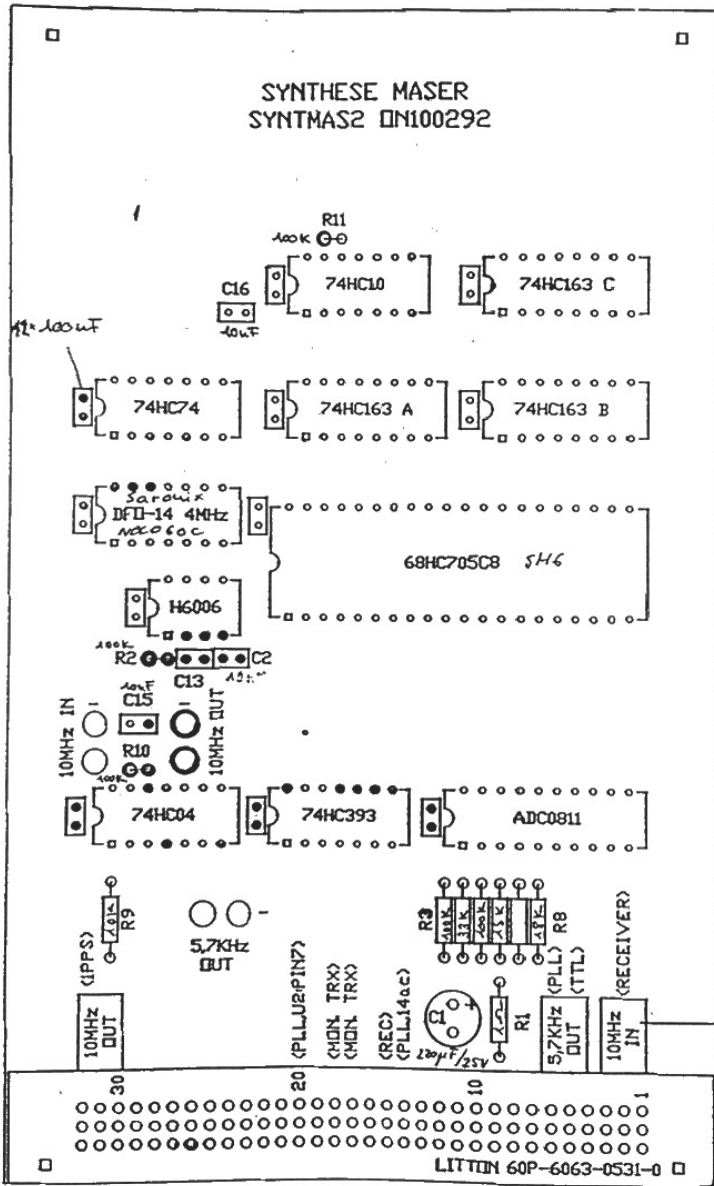
R7: ne pas monter

Size	Number	Revision
03	SYNTHESE MASER	
03	SYNTHESE MASER	

Title	Number	Revision
SYNTHESE MASER		
SYNTHESE MASER		

EF-

SYNTHESE MASER
SYNTMAS2 IN100292



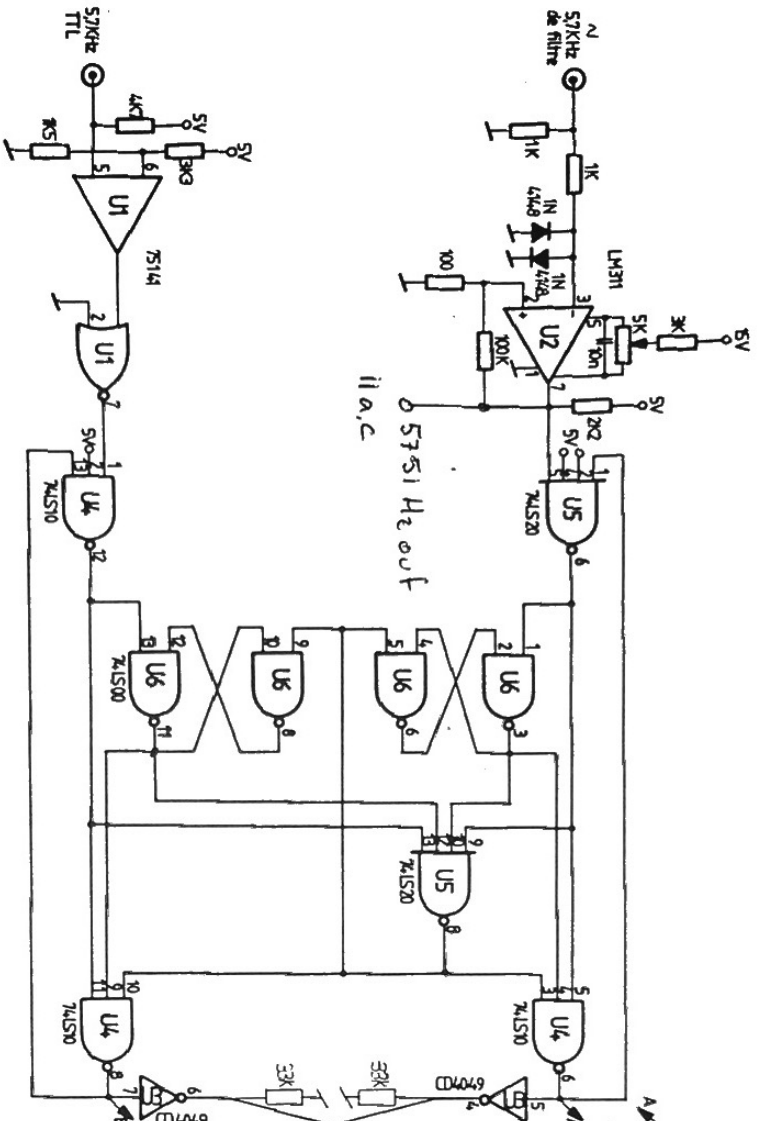
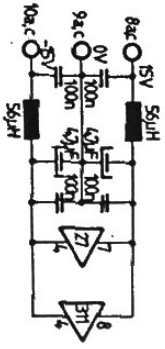
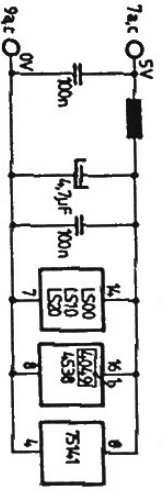
DIP-6063-0032
R1 R2 R3 R4 R5 R6 R7 R8
NE PAS MONTER

5.7KHz IN
RS232 IN
RS232 DUT
AMPL 5751Hz IN
XTAL IN
GND
+5V IN

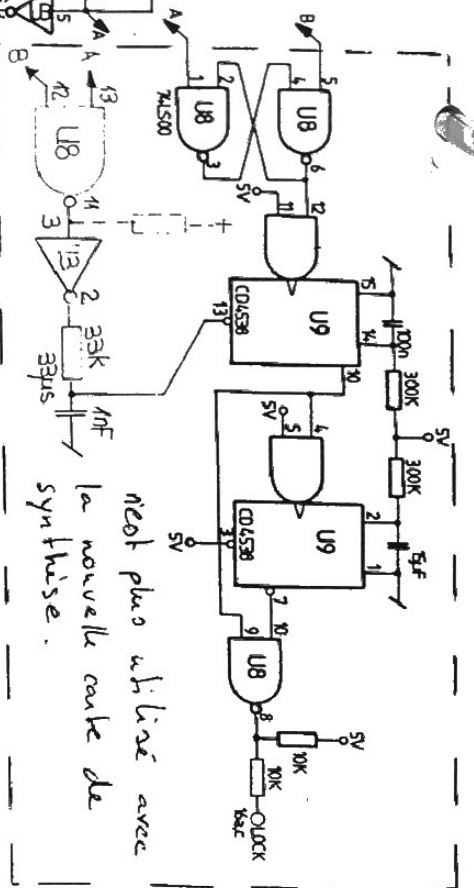
NTMAS2 Check Plot

CONN.	ECON96	60P
COUNTERD	DIP14	74HC393
CONVER.	DIP20	ADC0811
INV1	DIP14	74HC04
OSC1	DIP14	DFO-14 4MHz
FF1	DIP14	74HC74
COUNTERA	DIP16	74HC163
COUNTERB	DIP16	74HC163
COUNTERC	DIP16	74HC163
NAND1	DIP14	74HC10
PROC	DIP40	68HC705C8
WATCHDOG	DIP8	H6006
C1	ELECTROLYT	220uF/25V
C9	CERAM MULTI	100nF
C5	CERAM MULTI	100nF
C6	CERAM MULTI	100nF
C3	CERAM MULTI	100nF
C8	CERAM MULTI	100nF
C7	CERAM MULTI	100nF
C11	CERAM MULTI	100nF
C12	CERAM MULTI	100nF
C13	CERAM MULTI	100nF
C14	CERAM MULTI	100nF
C2	CERAMIQUE	10nF
C15	CERAMIQUE	10nF
R6	FILM METAL	15K
R7	FILM METAL	
R8	FILM METAL	18K
R5	FILM METAL	100K
R4	FILM METAL	33K
R3	FILM METAL	100K
R1	FILM METAL	1
R9	FILM METAL	10K
R2	FILM METAL	100K
R10	FILM METAL	100K
R11	FILM METAL	100K

Retirer les fins 10-14 sur U6 [74LS00]
 Relever le pin 7 de U2 au connecteur II a.c



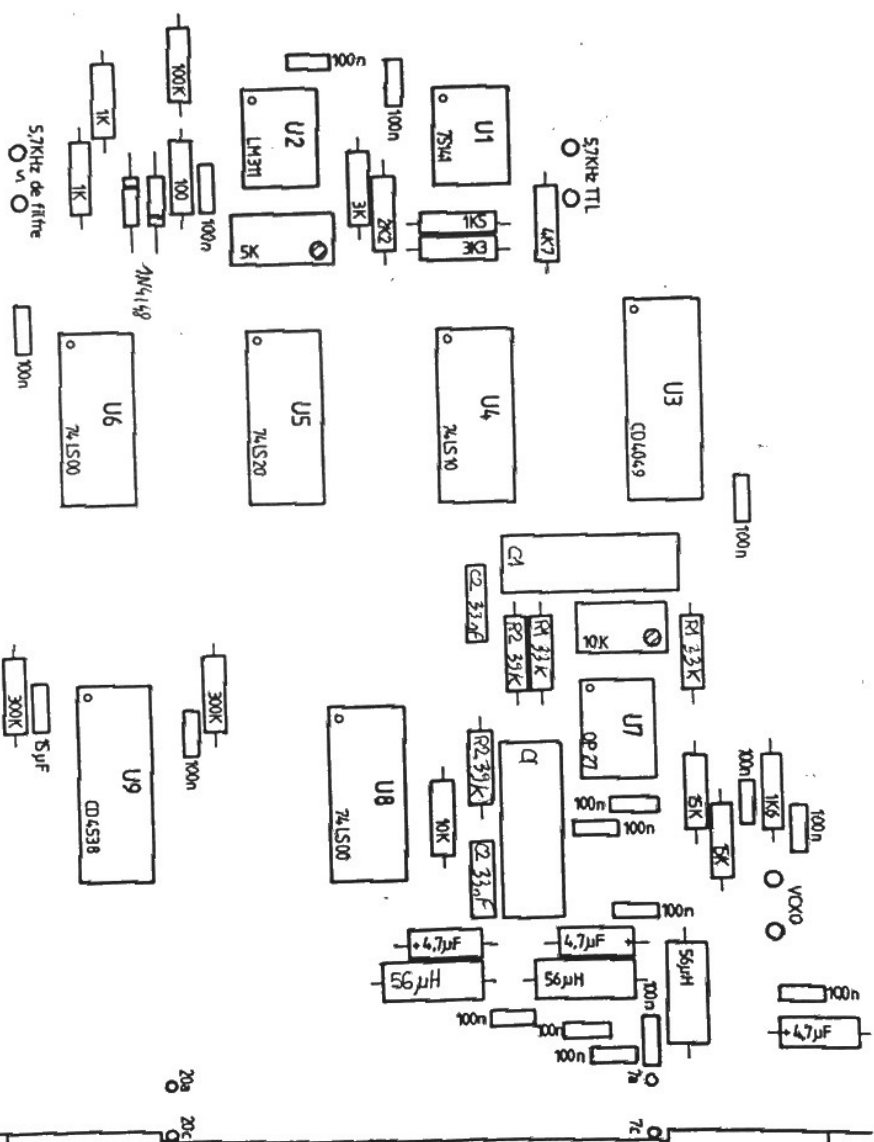
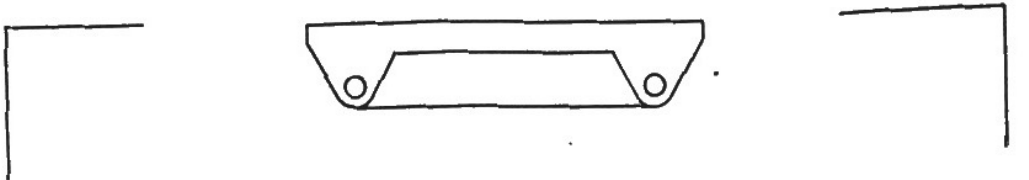
PHASE DETECTOR & FILTER
 8002 - 30 - 22 - 1159



net plus aligné avec
 la nouvelle carte de
 synthèse.

modifié le 12.10.94 LG

28.10.82P



PHASE DETECTOR & FILTER
COMPONENT MOUNTING
8002 - 30 - 24 - 1159

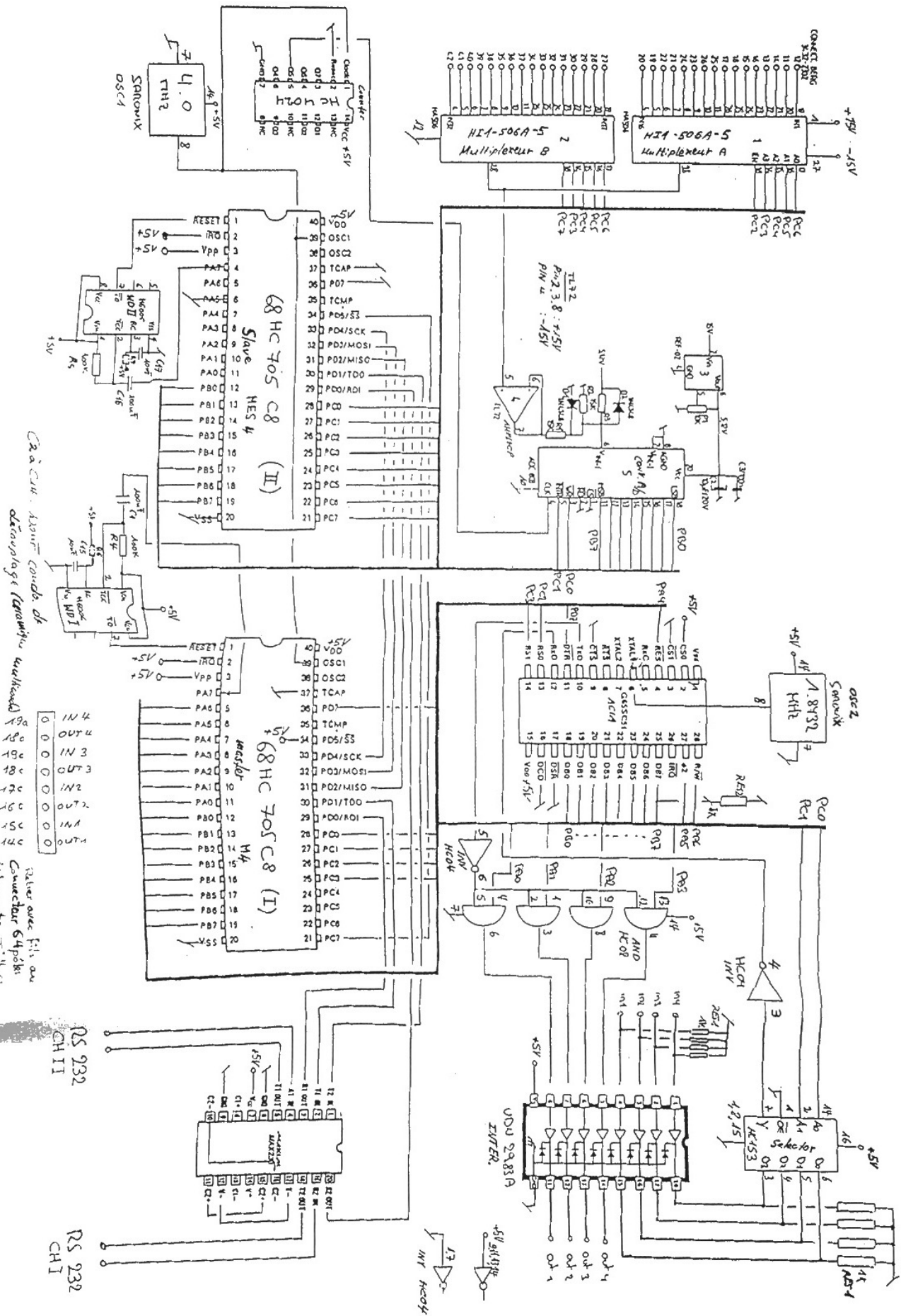
29. 30. 82. 4p

CONNECT. LITTON 2x 20P. + 2x 2 COAX.

Monitoring Masor

MONITRAX PCB 3rd version

24 Mars 1991

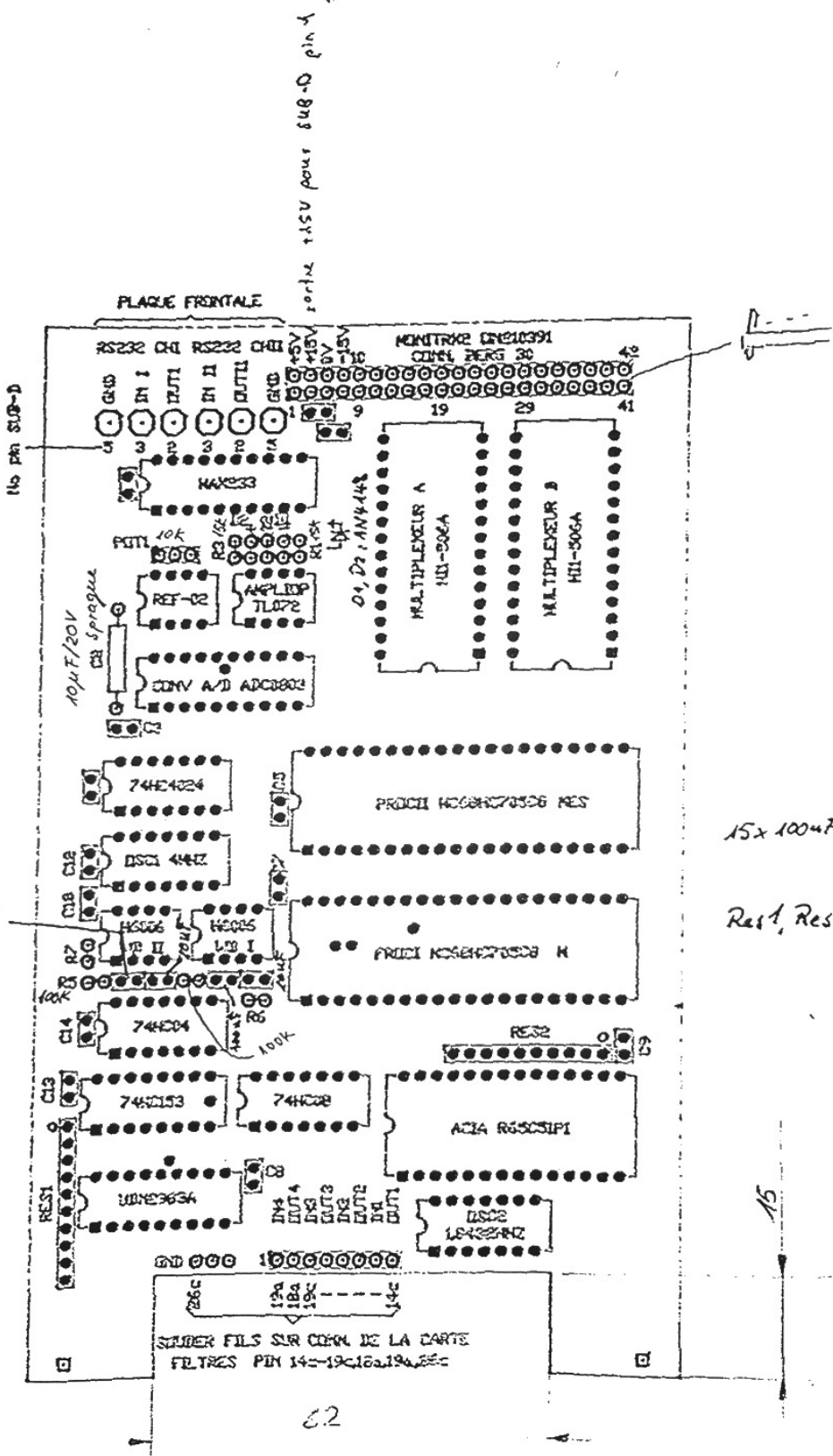


Caution: Attention: Connexion des câbles de données (terminés) uniquement sur les points de connexion spécifiés dans le schéma.

0	IN 4
0	OUT 4
0	IN 3
0	OUT 3
0	IN 2
0	OUT 2
0	IN 1
0	OUT 1

RS 232
CH1

RS 232
CH1



Monitoring Maser 3^{ème} version
 MINITR02PCB 1447 21-10K-1981 Hirose 1 484 Fast Color Check Plot SIZE 4.250 x 6.480 inch

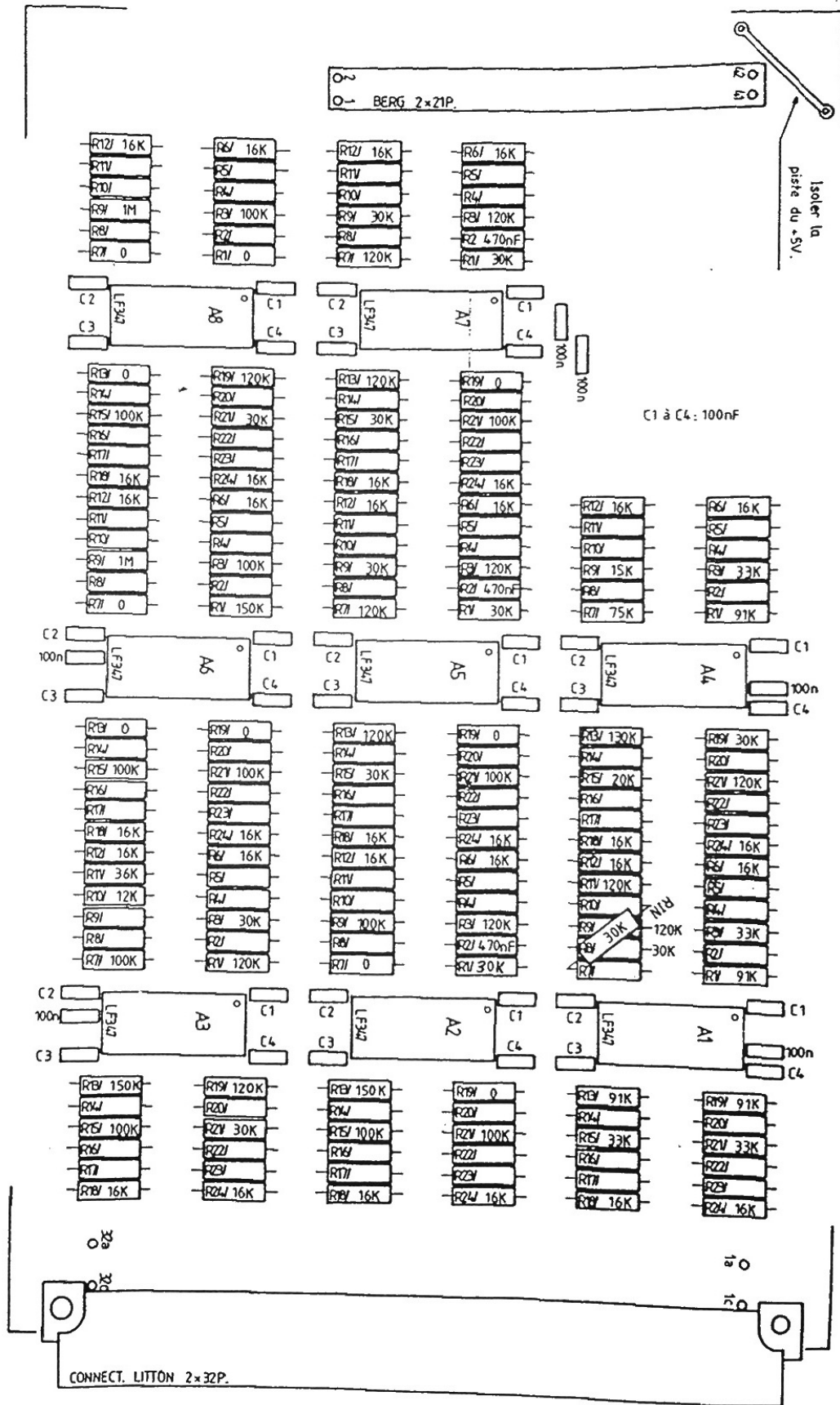
stock.	note	Désignation	Norme, stock, etc.	OSA N°
	2	Résistance HRS 25	15K	Distrelec
	1	"	100K	"
	2	Réseau de résistance 10p.	1K $\frac{10}{p}$	"
	1	Pot.	10K / 183W	" / Coustelec
6	2	Diode	1N4148	Distrelec / IT
	1	Condensateur	10µF / 20V Sprague	Telion
	2	Condensateur céramique	10nF	Philips / Distrelec
10	15	"	100nF multicouche	"
	1	Barrettes de contact	1 x 2 pin	
	1	Circuit Intégré	74HC04 National	Fenner
16	1	"	74H08	"
	1	"	74HC 153	"
	1	"	74HC 4024	"
	1	" CONV. A/D	ADC0803	"
	1	"	HI1-508A	Basix
	1	" ACIA	RS5C51PI	"
	1	" RS 232	MAX 232	Laser & Electronic
	1	"	REF-02	Eljapex
	1	"	TL072	Fabrimex
	1	"	UDN 2983A Sprague	Telion
	2	"	MC68HC705 C8	Omni Ray
	2	Watch dog	H6006	
	1	Oscillateur	4MHz NCC 060C	Compota
	1	"	1,8432 MHz NCH030C	"
30	1	Connecteur PCB 2x21	Berg ^{Witgab} 76314-121 106012522 Berg	Compota
	1	Circuit imprimé	MONITRX1 ON260498	Fela
	2	socket 28 pin	USO-28T	
	3	socket 40 pin	USO-40T	

Mod.	Date	Visa	Mod.	Date	Visa	Mod.	Date	Visa	Mod.	Date	Visa	Mod.	Date	Visa
Monitoring TRX										Ecrit	6.12.90	H.B	Feuille A.	
										Contrôlé			A. Feuilles	
										MONITRX1				

SUR LES IC A2 ET A5, PONTER LES PINS 1 ET 2 + 3 ET 14.
 SUR LES IC A3 ET A1 COUPER LA PISTE ENTRE LA PIN 6 ET 7


MONITORING TRX FILTERS
 COMPONENT MOUNTING
 8002-30-24-1156

29.10.82 P
 MOD. 10.12.90 K.A.



destinataire ne peut, sans autorisation
 expresse et écrite de notre part, le
 reproduire ou le communiquer à des tiers.
 OSCILLOQUARTZ SA, NEUCHÂTEL SUISSE

Position	Nbre	Désignation	Norme, stock, etc.	OSA N°
1	1	Circuit imprimé	8002-30-25-1156	Printelec
2				
3	8	Quad op-amp	LF347B	Ferrari
4	8	Socle 14 pattes	USO-14T	Compoua
5				
6	1	Résistance 12k	MR25	Philips
7	1	15k		
8	32	16k		
9	1	80k		
10	12	30k		
11	4	33k		
12	1	36k		
13	1	75k		
14	4	91k		
15	13	100k		
16	12	120k		
17	1	130k		
18	5	150k		
19	2	1M		
20				
21	38	Condensateur céramique	100nF multicouche 9932 343 0235	
22				
23	1	Broche droite 2x21	75844-118/06012180 Berg	Leitgeb
24	1	Connecteur DIN 41612	96P-6033-0523-0	Littlon
25				
30				
35				
40				

Mod.	Date	Visa	Mod.	Date	Visa	Mod.	Date	Visa	Mod.	Date	Visa	Mod.	Date	Visa
Filtres										Ecrit	23.8.86	JP	Feuille 1...	
										Contrôlé			1... Feuilles	
 OSCILLOQUARTZ S.A. NEUCHÂTEL SUISSE										8002-40-02-1156				

FILTRRS MONITORING

EFOS -
Date :

Pin No	Canal	Valeur nom.	Filter In	Amp11 No	R1 Kohm	R2 Kohm	R3 Kohm	R4 Kohm	R5 Kohm	R6 Kohm	C1 nF	Gain filtre	Facteur Soft
30C	U batt A	24V	4V	A8-3	0		100			16	100	1	0.24
29a	I batt A	10A	4V	A8-2	0		1000					1	0.10
31C	U batt B	24V	4V	A6-3	0		100					1	0.24
30a	I batt B	10A	4V	A6-2	0		1000					1	0.10
31a	T Source	100C	1V	A3-2	0			12	36			4	1.00
24a	Set H press	10V	10V	A6-1	150		100					0.4	0.10
32C	Meas H press	10V	10V	A3-3	150		100					0.4	0.10
25C	Pal	20V	20V	A8-4	120		30					0.2	0.20
21C	Lo	20V	20V	A5-3	120		30					0.2	0.20
21a	Uo	20V	20V	A5-2	120		30					0.2	0.20
20a	Da	20V	20V	A7-2	120		30					0.2	0.20
20C	L1	20V	20V	A7-3	120		30					0.2	0.20
23a	U1	20V	20V	A3-1	120		30					0.2	0.20
23C	Cav	20V	20V	A3-4	120		30					0.2	0.20
25a	T Cav	+/-1C	4V	A8-1	0		100					1	0.01
24C	T Amb	+/-10C	4V	A6-4	0		100					1	0.10
22C	Cav Var	10V	10V	A2-3	150		100					0.4	0.10
22a	C Field	200UA	4V	A2-2	0		100					1	2.00
13a	U int 2	-5kV	-5V	A7-1	30	470nF	120					0.8	0.05
13C	I int 2	-2mA	4V	A7-4	0		100					1	-0.02
12a	U int 1	-5kV	-5V	A5-1	30	470nF	120					0.8	0.05
12C	I int 1	-2mA	4V	A5-4	0		100					1	-0.02
11a	U ext	-5kV	-5V	A2-1	30	470nF	120					0.8	0.05
11C	I ext	-2mA	4V	A2-4	0		100					1	-0.02
9C	U osc	30V	30V	A4-3	130		20					0.13	0.31
10a	I osc	1A	-1V	A1-2		30	120	30*	120			-4	0.01
9a	+24V	24V	24V	A4-2			15					0.16	0.25
10C	+15V	15V	15V	A1-3	91		33					0.26	0.15
7C	-15V	15V	15V	A4-1	91		33					0.26	-0.15
7a	+5V	5V	5V	A4-4	30		120					0.8	0.05
6a	+15V	15V	15V	A1-1	91		33					0.26	0.15
6C	-15V	15V	15V	A1-4	91		33					0.26	-0.15
RS 232	OEXO Var											0.4	0.10
RS 232	Amp 5.7 KHz											0.4	0.10

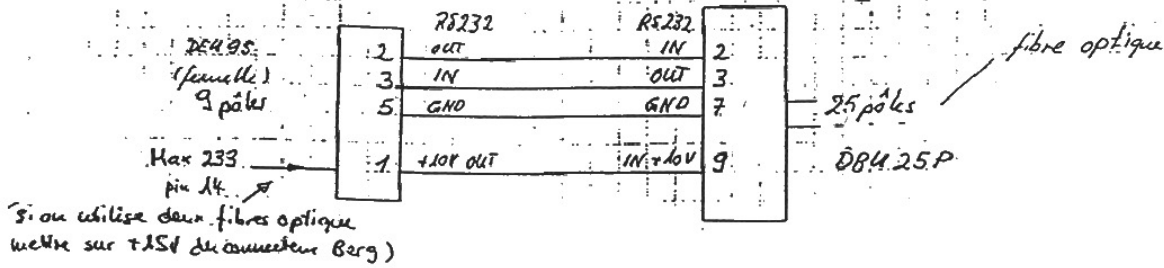
CONN BERG PIN	FRONT PANEL	CONNECT TO DIN41612 (RS232)
12	IN1	
11	IN2	
14	IN3	
13	IN4	
16	IN5	
15	IN6	
18	IN7	
17	IN8	
25	IN9	
26	IN10	
23	IN11	
24	IN12	
21	IN13	
22	IN14	
19	IN15	
20	IN16	
27	IN17	
28	IN18	
29	IN19	
30	IN20	
31	IN21	
32	IN22	
33	IN23	
34	IN24	
37	IN25	
36	IN26	
35	IN27	
38	IN28	
39	IN29	
40	IN30	
41	IN31	
42	IN32	
	GND	14c OUT1 (TO SYNTHESIZER)
	IN I } CHI	15c IN1 (FROM SYNTHESIZER)
	OUT I }	16c OUT2
	GND	17c IN2
	IN II } CHII	18c OUT3 } EXTENSION
	OUT II }	19c IN3
		18a OUT4
		19a IN4
		26c GND

MONITRX1 (MONITOR TRX)

Connecteurs

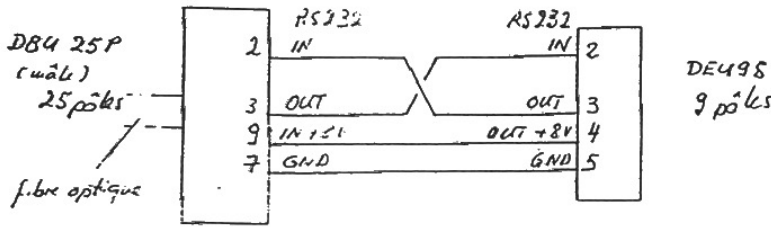
Maset (Monitoring)

Fibre optique (OLINK)



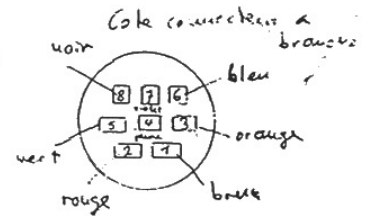
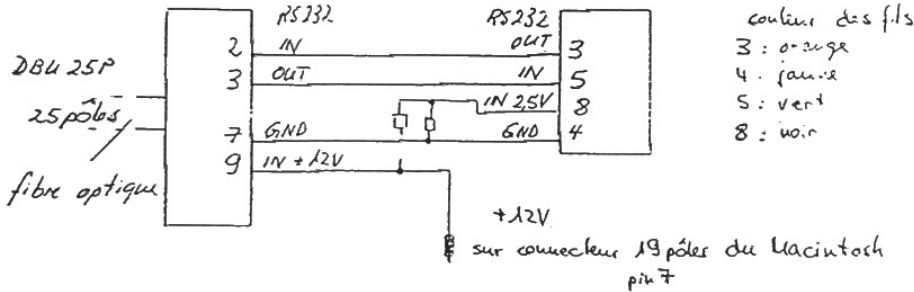
Fibre optique (OLINK)

Toshiba



Fibre optique (OLINK) ancienne version

Macintosh (Mini DIN 8)



Nouvelle version O Link

